

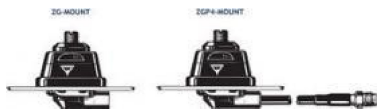
ML 1-ZG

$\frac{1}{4} \lambda$ Mobile Antenna with Shock Spring for the 80 MHz BAnd

- Sturdy, general-purpose $\frac{1}{4} \lambda$ antenna in professional quality.
- Available with glass fiber or stainless steel whip.

DESCRIPTION

- Stainless steel ZG-mount with M8 x 1-thread whip-fastening system.
- Simple mounting exclusively with access from the outside.
- Choice between two connection principles: ZG-mount:
 - FME-connection (supplied without cable).
 - ZGP4-mount: Permanently attached 4 m cable terminated with FME-connector.



ORDERING DESIGNATIONS

TYPE WHIP Glass fiber	PRODUCT NO.	TYPE WHIP Stainless steel	PRODUCT NO.	MOUNT VERSION
ML 1-ZG	130000609	ML 1-ZGR	130000611	ZG-mount with FME-system
ML 1-ZGP4	130000610	ML 1-ZGP4R	130000612	ZGP4-mount with 4 m cable and FME-connector

SPECIFICATIONS

ELECTRICAL	
MODEL	ML 1-ZG
ANTENNA TYPE	$\frac{1}{4} \lambda$ mobile whip antenna
FREQUENCY	Tunable by cutting within: 66...88 MHz (Also applicable: 88...175 MHz)
IMPEDANCE	Nom. 50 Ω
POLARIZATION	Vertical
GAIN	0 dB (acc. to EIA RS-329-1)
BANDWIDTH	≥ 8 MHz @ SWR ≤ 2.0

SWR	≤ 1.3 @ f. res.
MAX. POWER	250 W
MECHANICAL	
MATERIALS	Whip: Conical glass fiber or black-chromed stainless steel. Black-chromed brass Spring: Black-chromed stainless steel Mount: Black-chromed brass Weather- and shockproof plastics Stainless steel
RECOMMENDED INSTALLATION TORQUE	7.5 ± 1 Nm
COLOUR	Black
HEIGHT	Approx. 1.1 m
WEIGHT	ZG-version: Approx. 210 g ZGP4-version: Approx. 360 g
MOUNTING	21 mm dia. hole

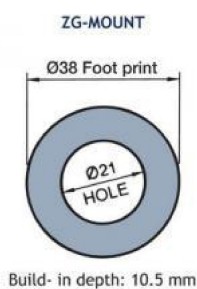
INSTALLATION

This antenna is supplied with our type ZG-mount for mounting from the outside in a 21 mm dia. hole on horizontal surfaces as e.g. roof top or trunk lid.

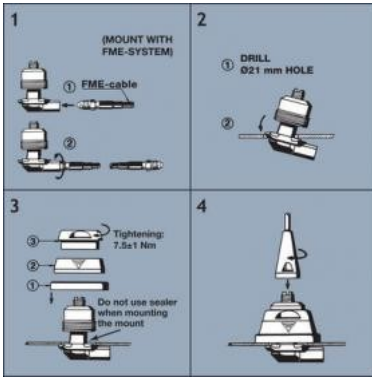
The ZG-mount is provided with an M8 x 1 thread mount system. This construction meets the demand for a low-profile mobile mount with a slim appearance and with protection against theft of the antenna whip.

When cleaning the car in automatic washing machines, the whip is easily removed using a spanner size 12 mm. The whip is refitted again by screwing it onto the M8 x 1 thread stud and tightening it with the spanner.

1. INSTALLATION DIMENSIONS



2. INSTALLATION STEPS



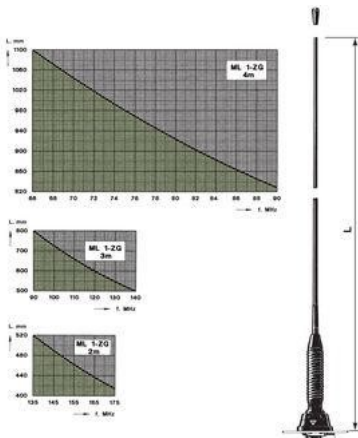
Do not use sealer on rubber gasket or other places.

3. TUNING

The antenna should always be tuned using an SWR-meter.

The cutting diagrams below serve as a guide for this procedure.

GLASS FIBRE WHIP



STAINLESS STEEL WHIP

